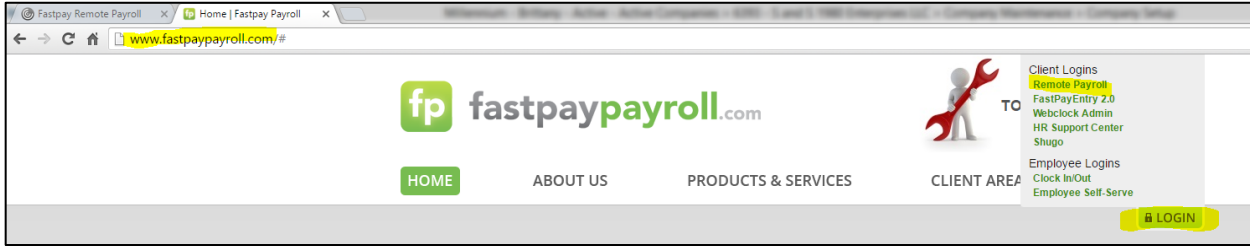


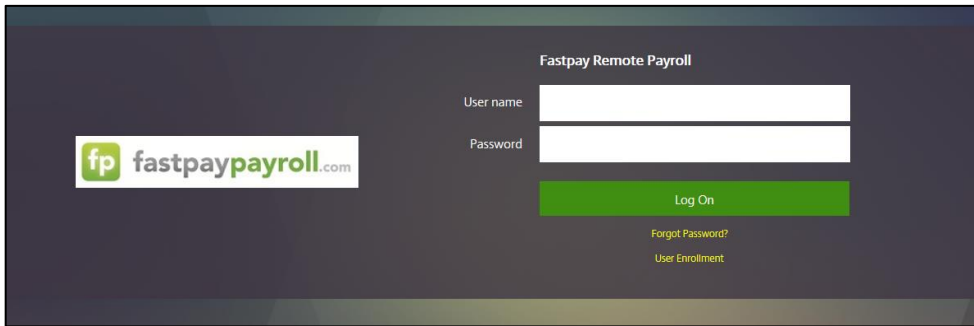
Citrix Install Notes (Chrome)

Follow the instructions below to install Citrix to your computer.

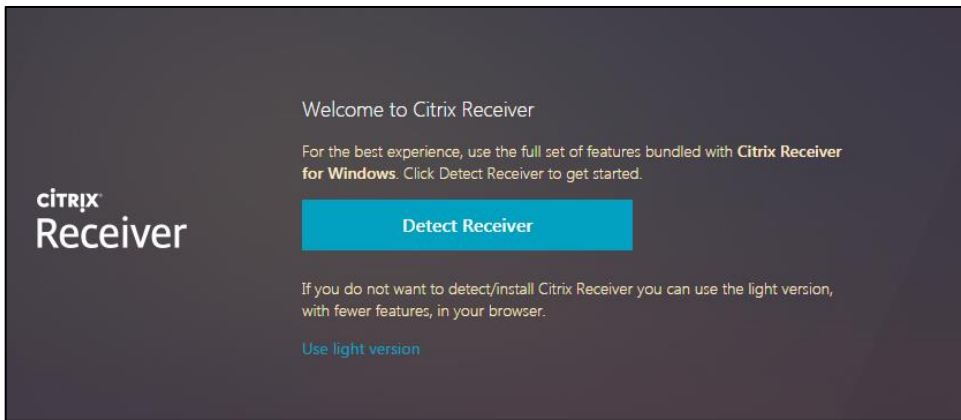
1. Go to fastpaypayroll.com, Click Login, Remote Payroll.



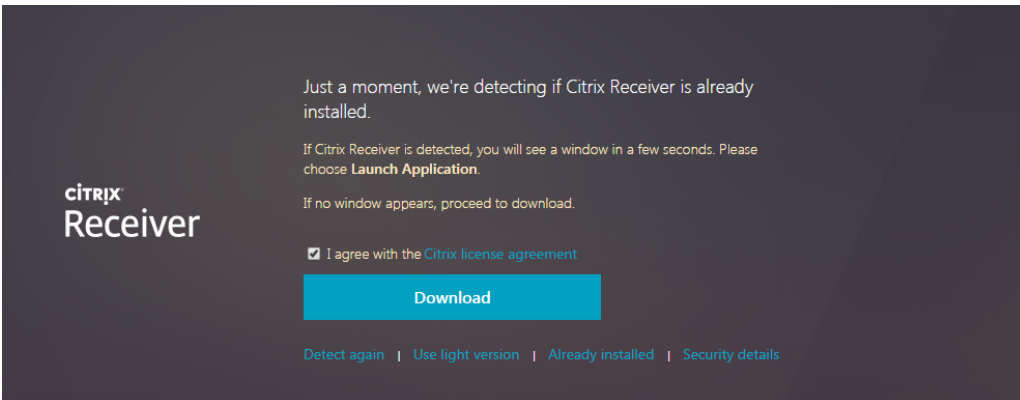
2. Enter Login Credentials.



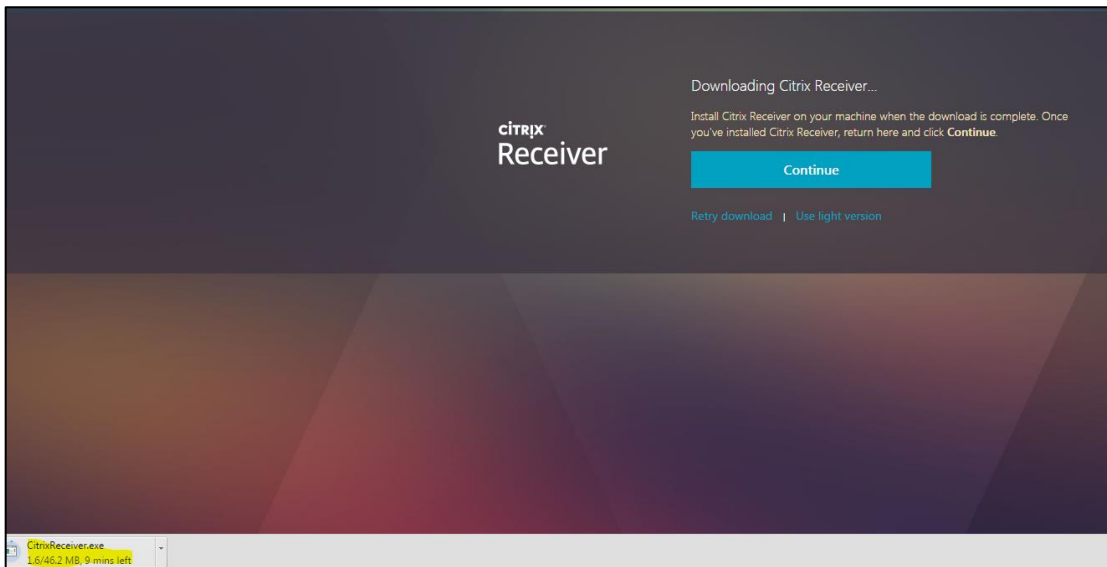
3. Click Detect Receiver.



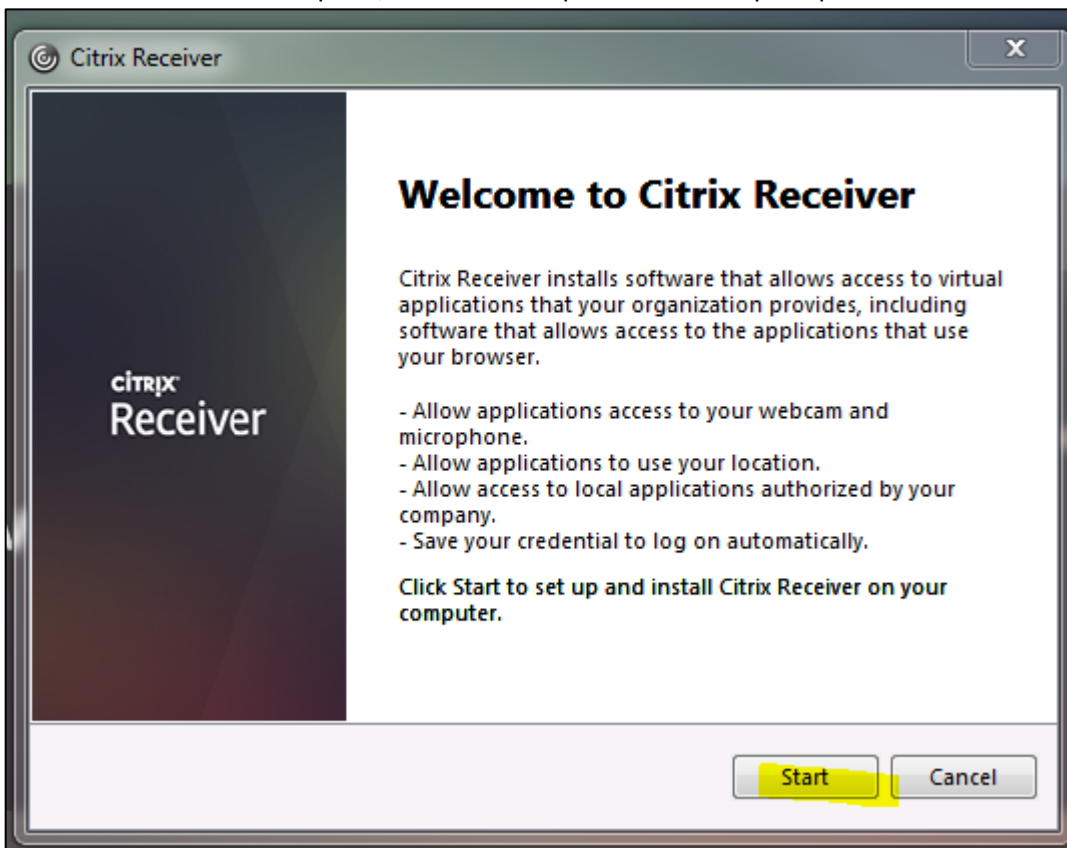
4. Click I agree and Download



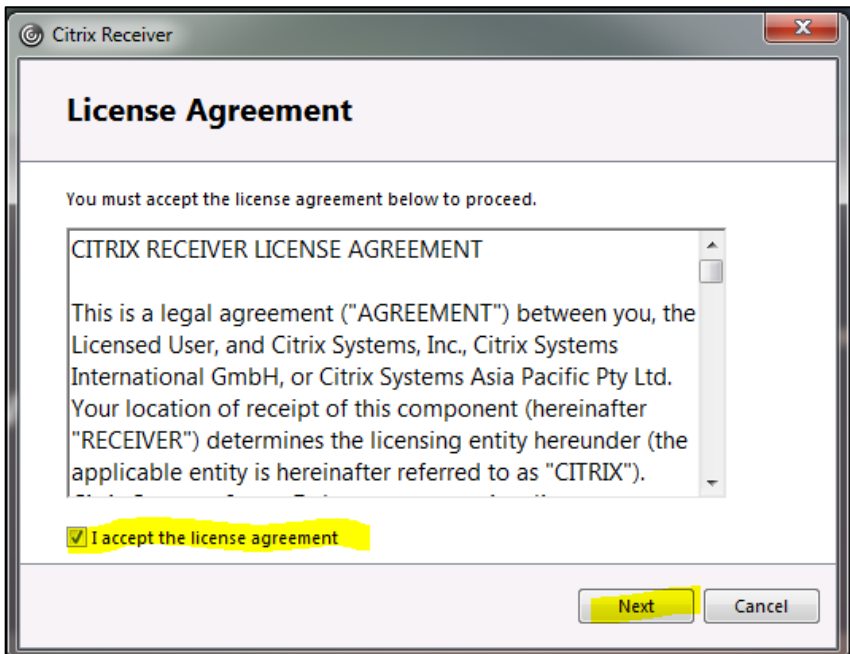
5. Open the Download at the bottom left of your screen. Don't close browser.



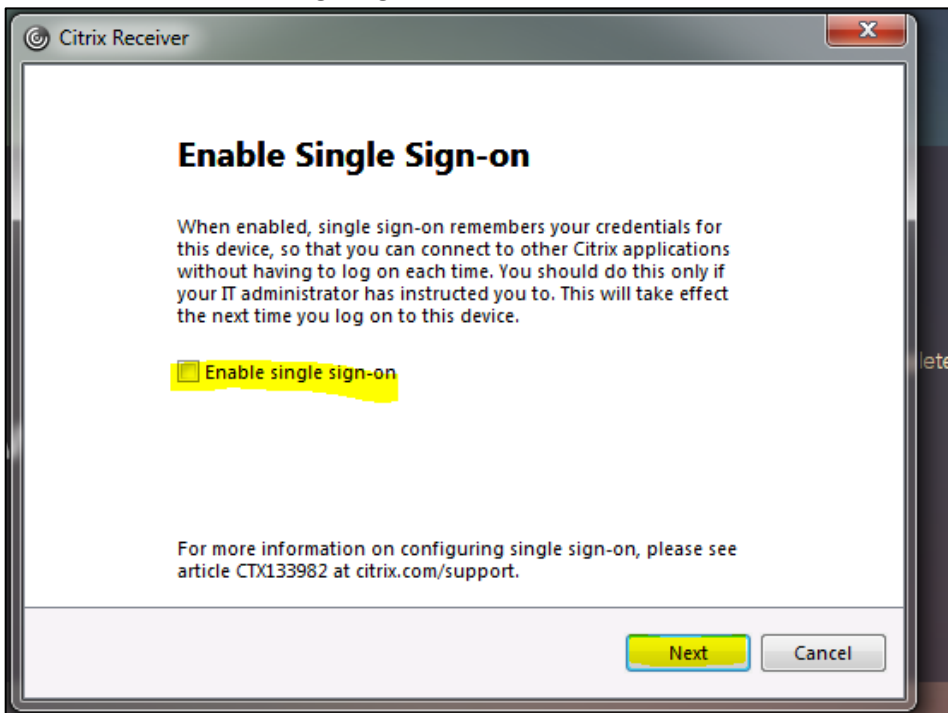
6. Once the download it complete, a wizard will open. Follow the prompts on the screen.



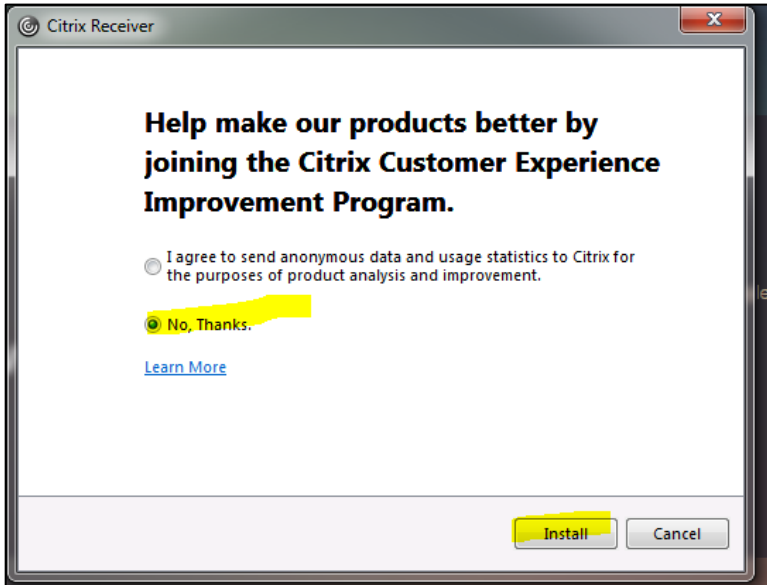
- 7. Agree to License Agreement → Next.



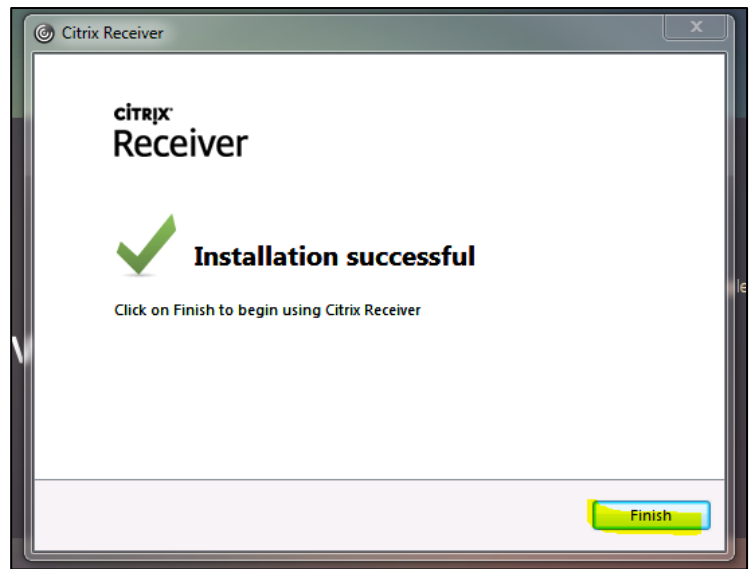
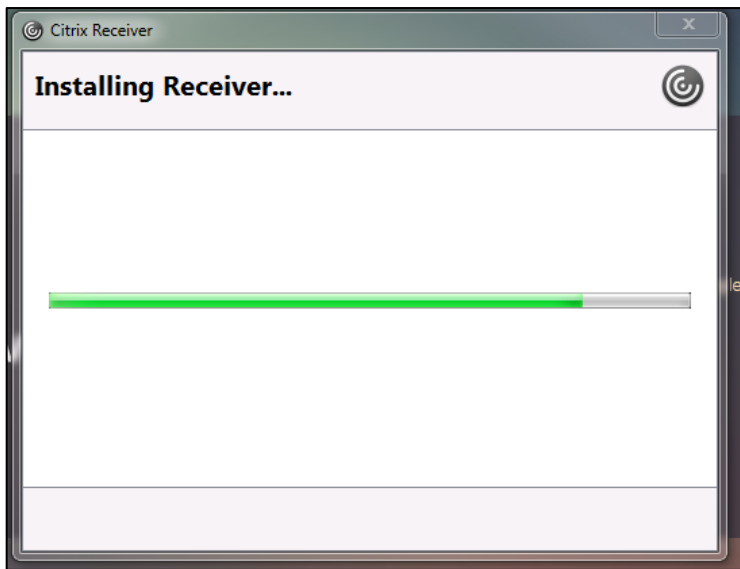
- 8. DO NOT CHECK Enable Single Sign On → Next.



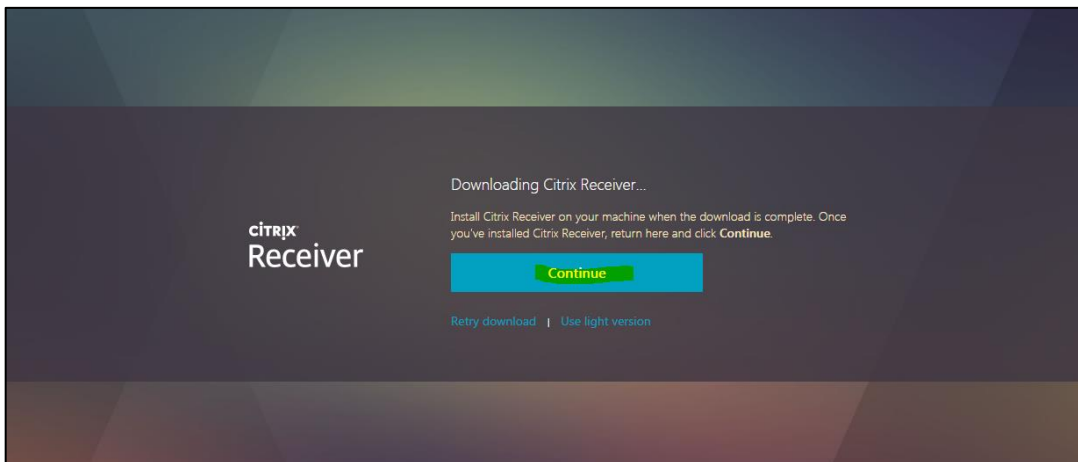
9. Do not join Citrix Customer Experience. → Install.



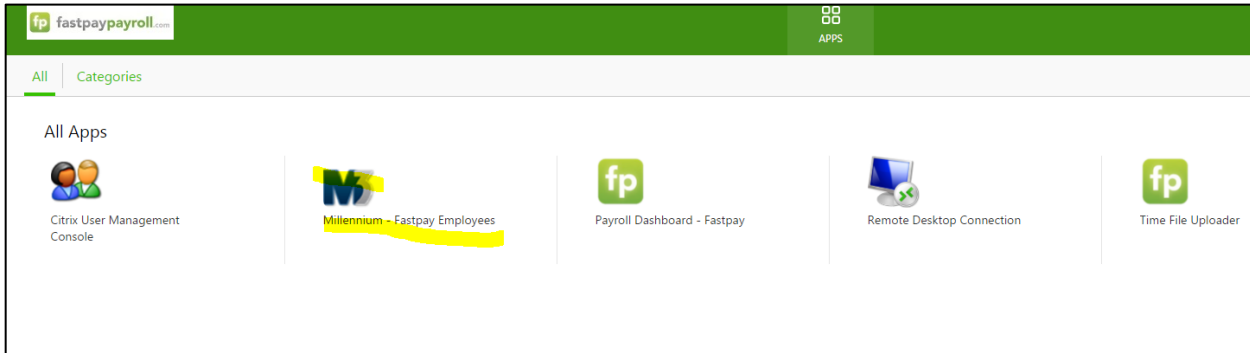
10. Wait for Install to finish. This may take a few minutes.



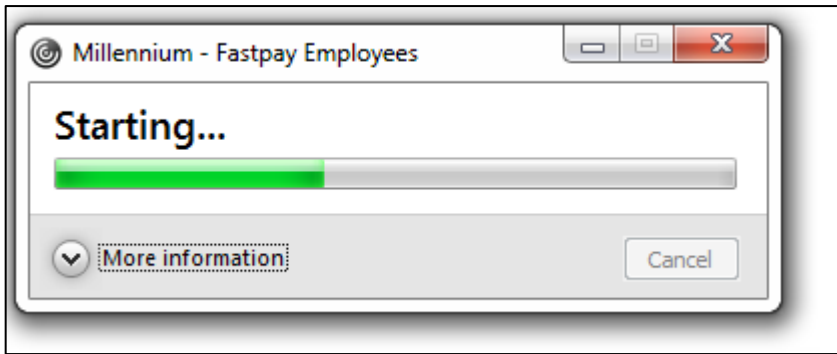
11. Click Continue in your browser once installation is successful.



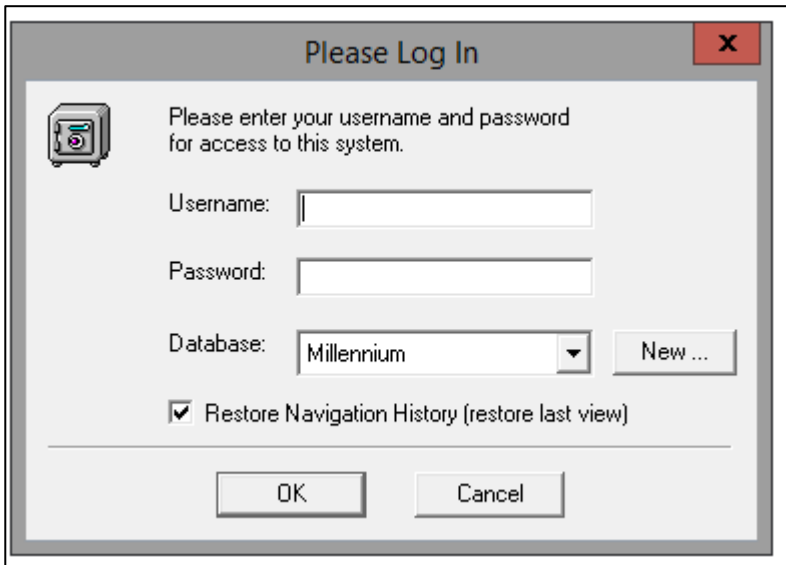
12. Click on Millennium (One Click Only)



13. Wait for Fastpay to load and open.



14. Enter your Login Credentials if it is asked.



15. M3 should open, and you are done! 😊